

Base VAC DENTAL SYSTEMS

by **REM**
EQUIPMENT



ASSEMBLY PROCEDURE

BVD5588-1 and BVD5588-2
24" and 48" STANDS

BVD5588-X DENTAL STANDS

The standard fastening cam is shown (fig. 1), loosen cam with a 6mm hex wrench provided (fig. 2) until the end pin is about 1/8" out.



fig. 1



fig.2

Insert connecting part extrusion through the pin (fig. 3) and lock in place with the hex key. Note to leave 1/8" from the edge to install the end cap (fig. 5) Follow the diagram for assembly position the pieces are labelled (fig. 6)



fig. 3



fig.4



fig. 5



fig. 6

Top Mounting the Pump

Position the top inner bars at 22.5" apart centre to centre for the single frame and equally space 2 sets at 14" centre to centre for the double frame. If mounting pump on frame top cross bars, remove the vacuum pump frame shock absorber (fig. 1) keep the nuts, flat washers and lock washers for re-use for mounting. The shock absorber can be kept in a safe place for future use if pump is mounted on the floor (fig. 2)



fig. 1



fig. 2

Shown is the new mounting hardware (fig. 3), the bolt fits into the centre extrusion and twisting clockwise so the head locks into position under the extrusion lip (fig. 4 and fig. 5)



fig. 3

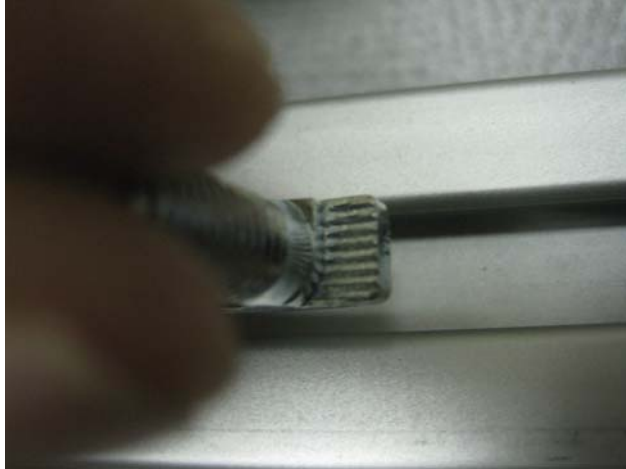


fig. 4



fig. 5

Next place the rubber pad over the bolt (fig. 6) and the frame over the pad (fig.7) and use the nuts, flat washers and lock washers to fasten down the frame (fig. 8). This is to be done on all four corners of the frame



fig. 6



fig. 7

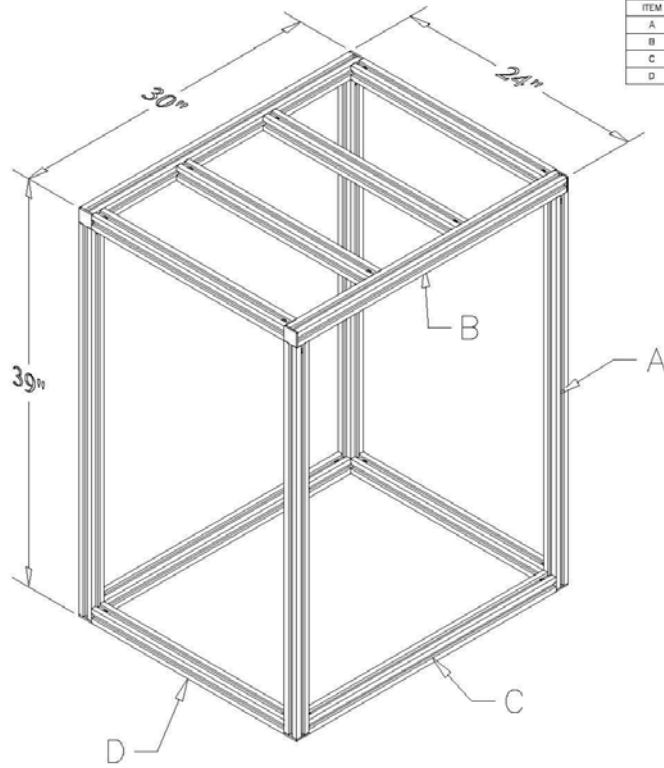


fig. 8

CLEAR ANODIZED

KIT FORM

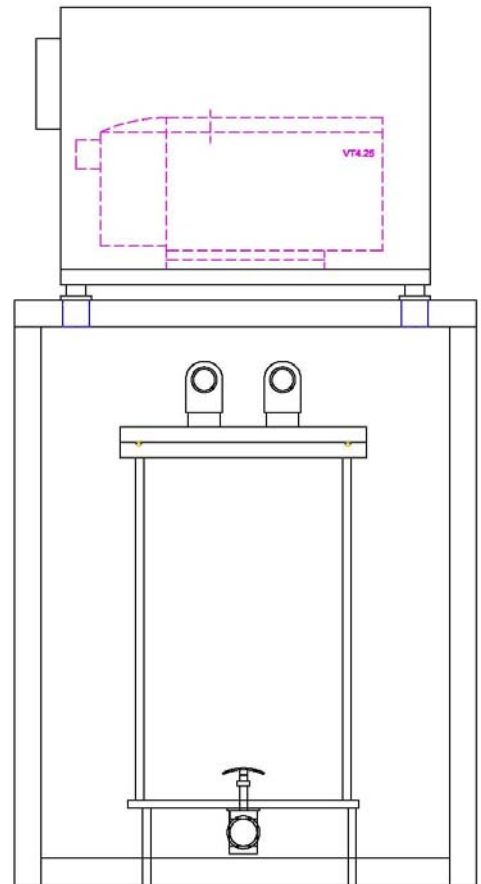
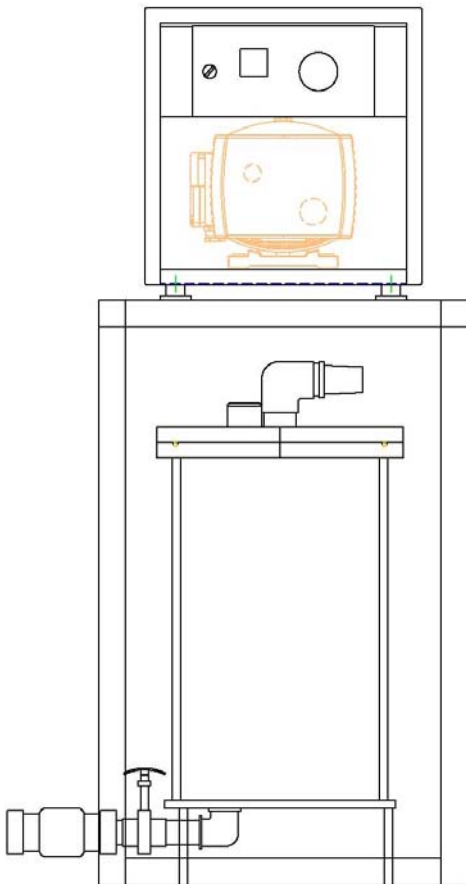
X2



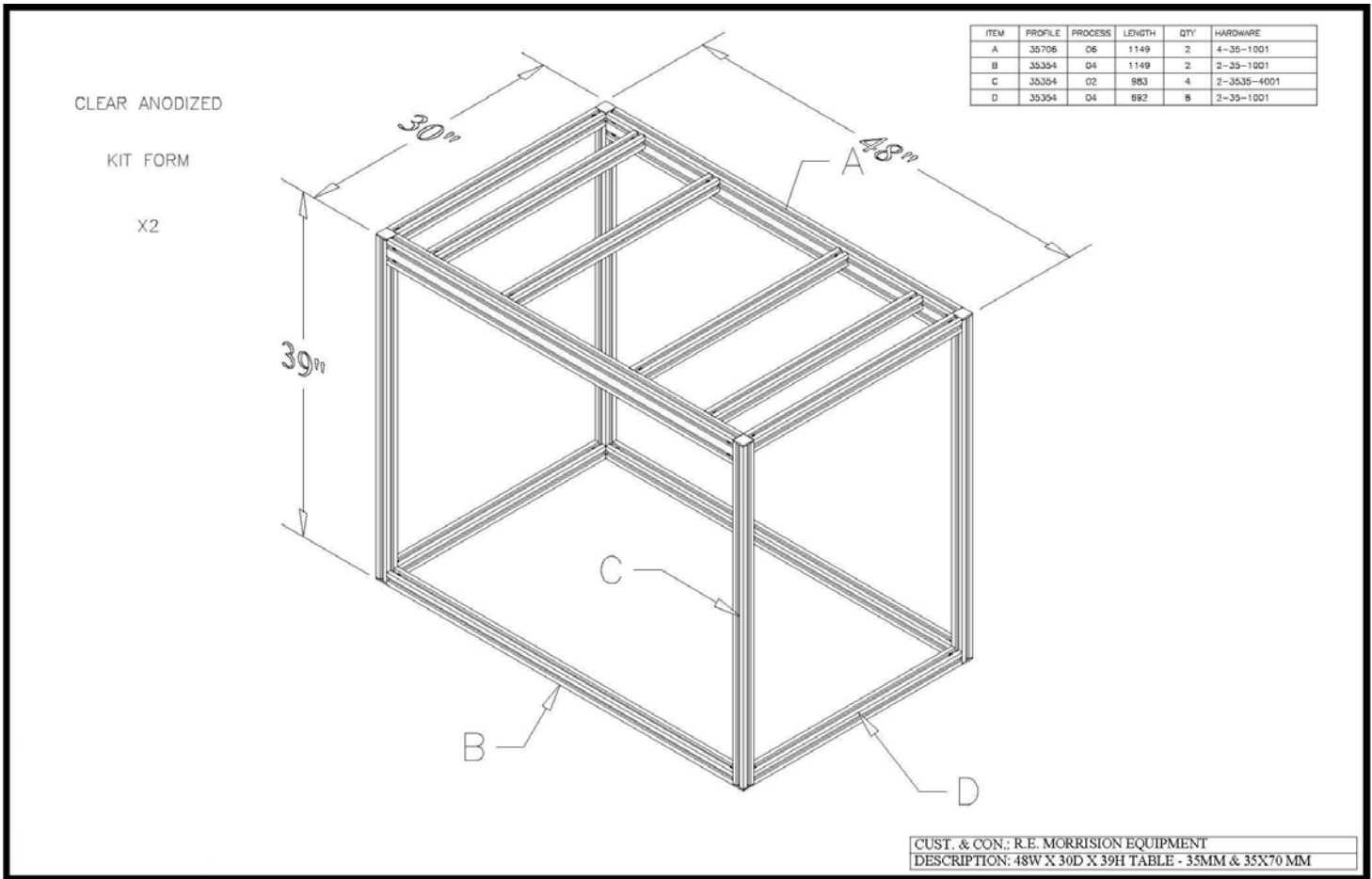
ITEM	PROFILE	PROCESS	LENGTH	QTY	HARDWARE
A	35354	03	952	4	1-35-1001,1-3535-4001
B	35354	02	754	2	2-3535-4001
C	35354	04	892	2	2-35-1001
D	35354	04	940	6	2-35-1001

CUST. & CON.: R.E. MORRISON EQUIPMENT
DESCRIPTION: 24W X 30D X 39H TABLE - 35MM W/CONN

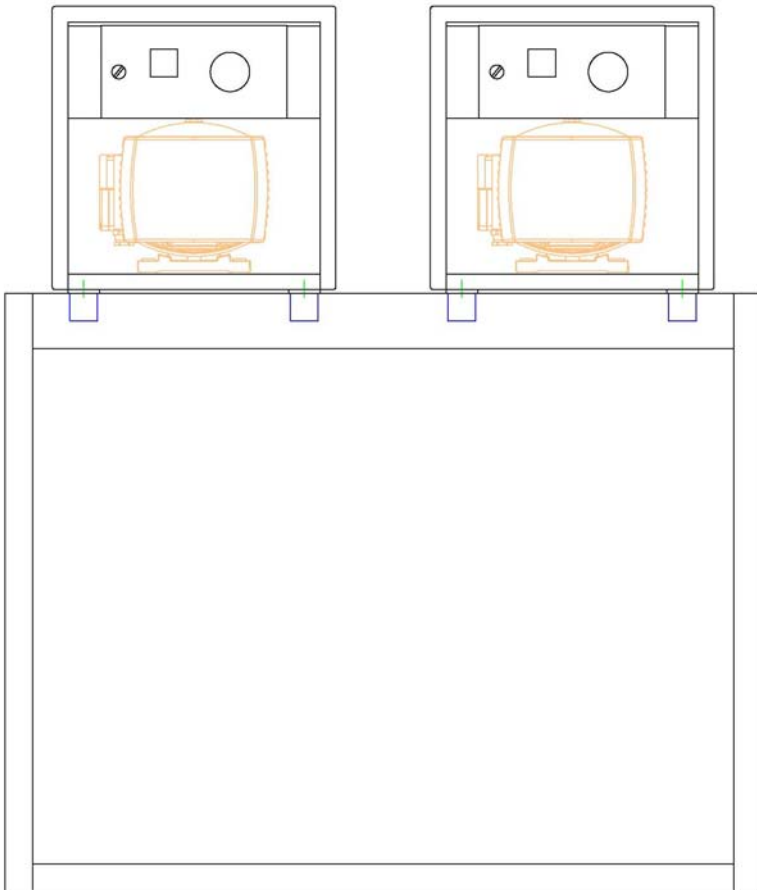
BVD5588-1



BVD5588-1 layout with pump and tank below

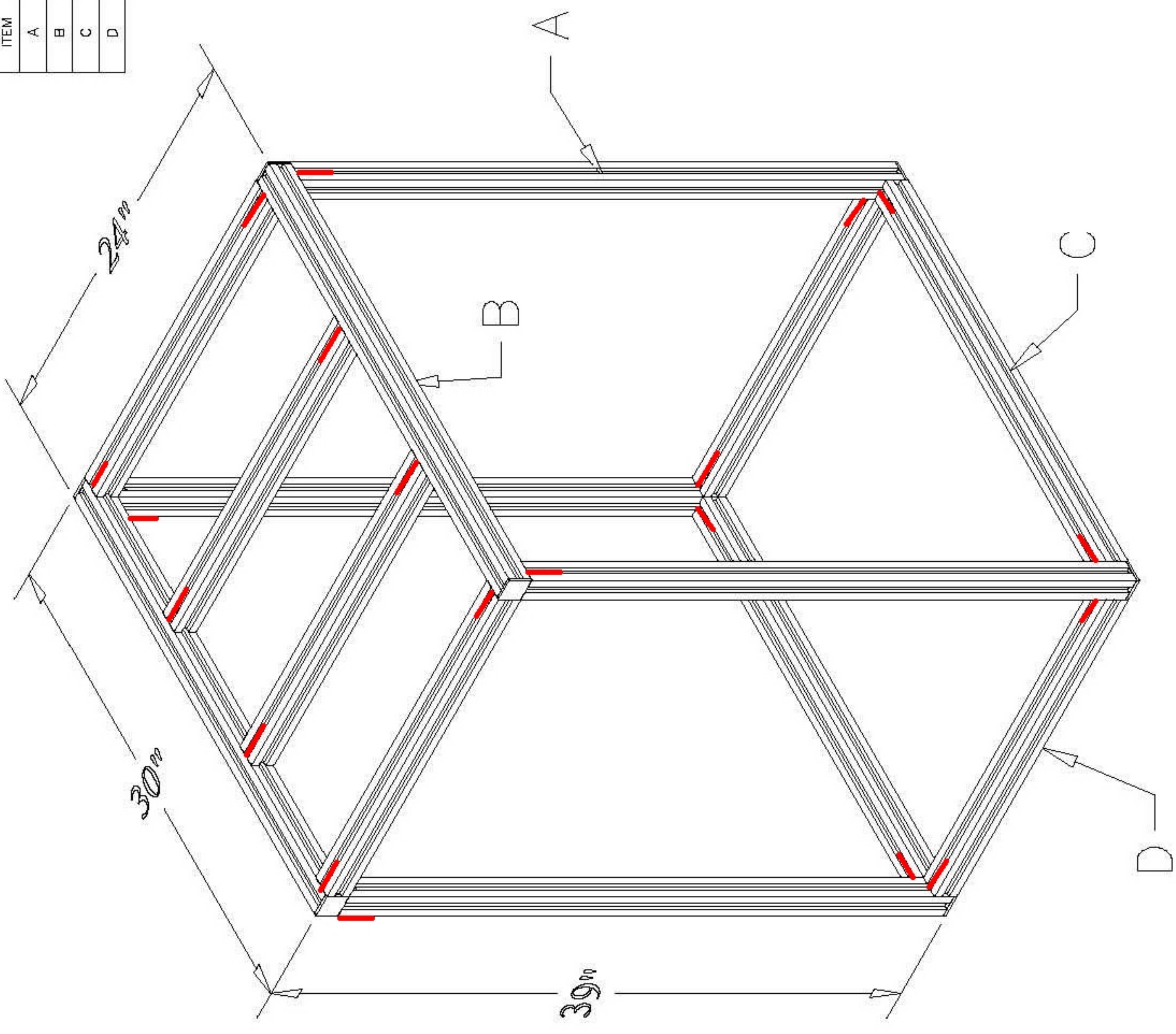


BVD5588-2



BVD5588-2 layout with double tan

ITEM	PROFILE	PROCESS	LENGTH	QTY	HARDWARE
A	35354	03	952	4	1-35-1001,1-3535-4001
B	35354	02	754	2	2-3535-4001
C	35354	04	692	2	2-35-1001
D	35354	04	540	6	2-35-1001



CUST. & CON.: R.E. MORRISON EQUIPMENT
 DESCRIPTION: 24W X 30D X 39H TABLE - 35MM W/CONN

