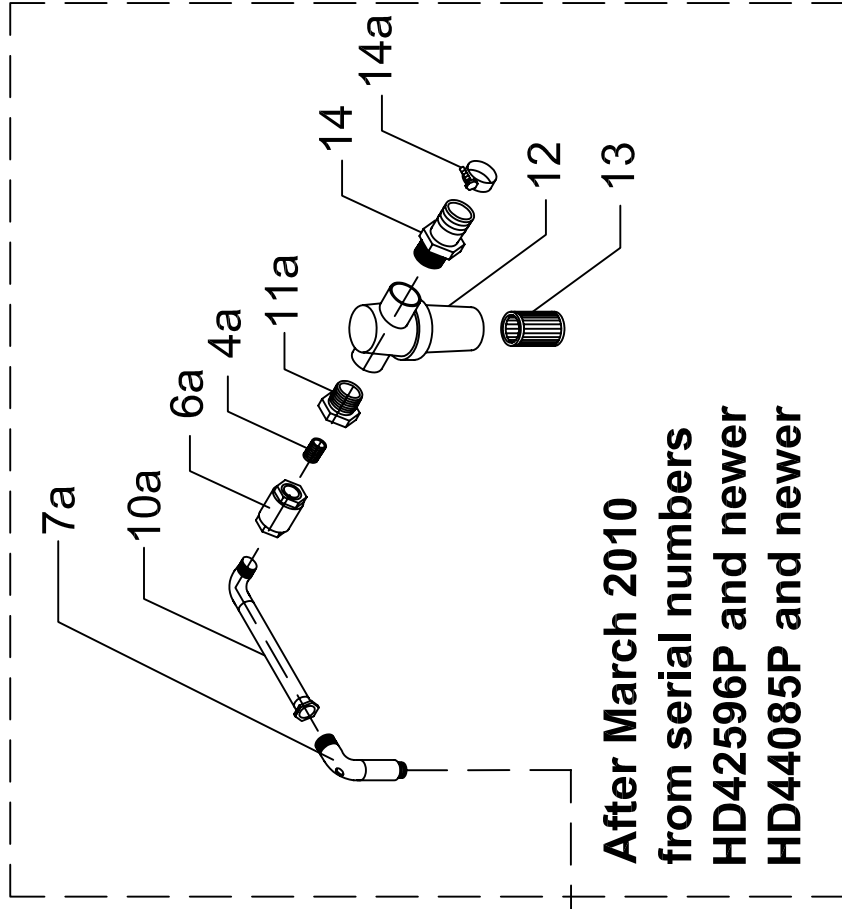
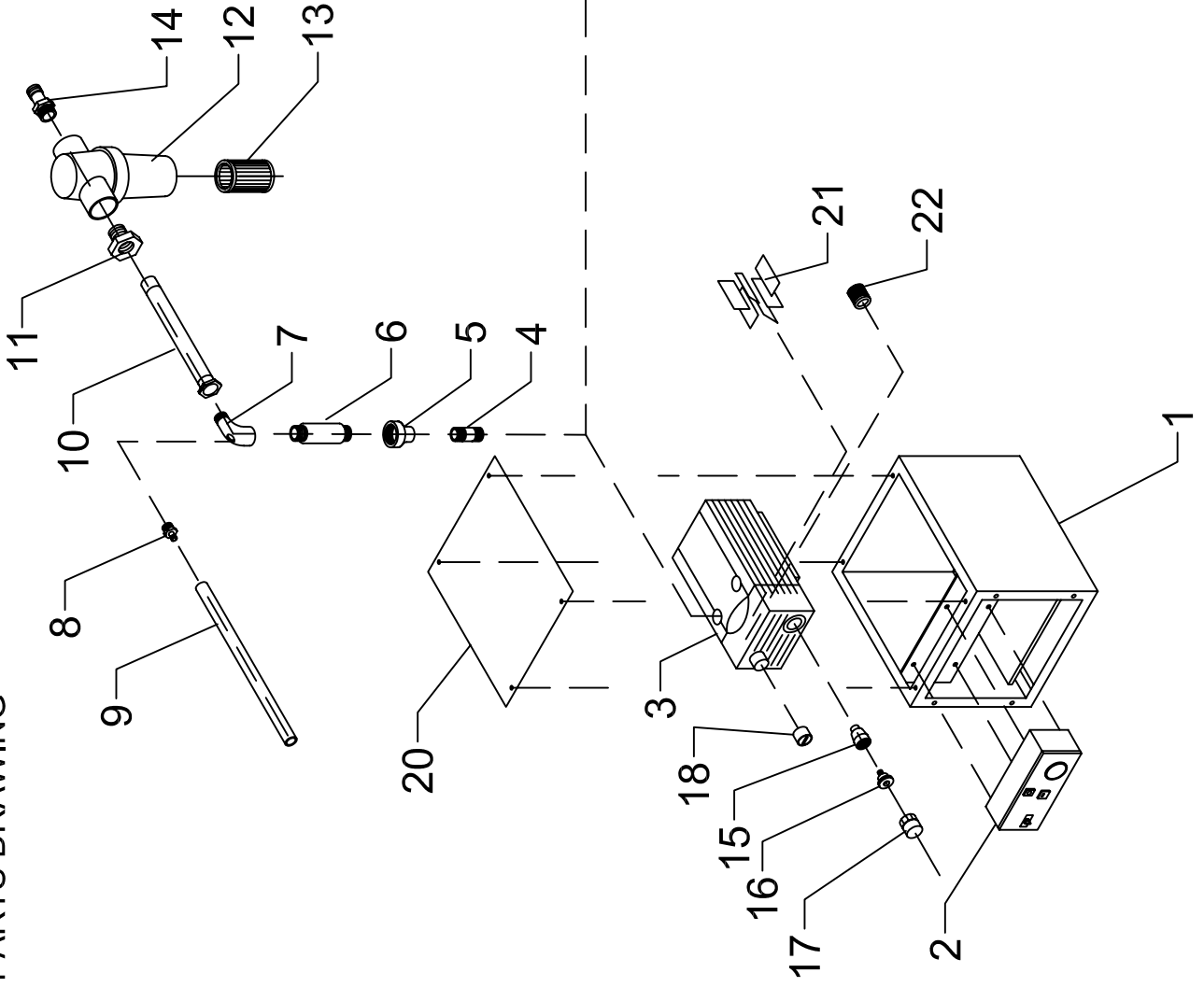


VACUUM PUMP
PARTS DRAWING



After March 2010
from serial numbers
HD42596P and newer
HD44085P and newer

VACUUM PUMP PARTS LIST

| POS. # | REM P/N | SABLE P/N | QTY | DESCRIPTION |
|--------|--------------------------------|----------------|-----|--|
| 1 | 543080 | 2800400 | 1 | FRAME WELDMENT |
| 2 | 176891//176892//176795//176893 | 2800401 | 1 | CONTROL BOX 110V.1ph// 220V.1ph// Plastic// 208V.3ph |
| 3 | SEE LIST BELOW | 2800402 | 1 | VACUUM PUMPS |
| 4 | 13401 | 2800403 | 1 | ¾" CLOSE NIPPLE |
| 4a | 1489 | | 1 | 1" CLOSE NIPPLE (PVC) |
| 5 | 13324 | 2800404 | 1 | 1" x ¾" REDUCING COUPLING |
| 6 | TECHNO1 | 2800405 | 1 | CHECK VALVE |
| 6a | MAST700-1 | | 1 | CHECK VALVE |
| 7 | 13275 | 2800406 | 1 | 1" 90° STREET ELBOW modified with ¼" NPT hole |
| 7a | INLPIPE1 | | 1 | INLET COPPER PIPING ASSEMBLY (PUMP SIDE) |
| 8 | 125-2B | 2800407 | 1 | ⅝" HOSE BARB x ¼" MPT |
| 9 | WCSPEB25 | 2800408 | 1 | ¼" POLY TUBING |
| 10 | PW15.5 | 2800409 | 1 | 15-½" LENGTH FABRICATED COPPER PIPE |
| 10a | INLPIPE2 | | 1 | INLET COPPER PIPING ASSEMBLY |
| 11 | 13363 | 2800410 | 1 | 1-½" x 1" HEX BUSHING |
| 11a | 2464 | | 1 | BUSHING 1- 1/2" x 1" (PVC) |
| 12 | FP1.50 | 2800411 | 1 | FILTER ASSEMBLY |
| 13 | FP252RE | 2800507 | 1 | FILTER ELEMENT |
| 14 | HB150 // HB200 | 2800412 | 1 | 1-½"HOSE BARB x 1-½"MPT // 2"HOSE BARB x 2"MPT |
| 14a | MIK47-51 | | 1 | HOSE CLAMP |
| 15 | 567029 | 2800413 | 1 | EXHAUST VALVE ADAPTOR |
| 16 | 72750206 | 2800508 | 1 | BLOW-OFF VALVE |
| 17 | 835-015 | 2800414 | 1 | FEMALE ADAPTOR FIPT x SOC. |
| 18 | 73600199613 | 2800415 | 1 | VACUUM REGULATING VALVE (STAINLESS TANKS) |
| 18 | 73600099613 | 2800416 | 1 | VACUUM REGULATING VALVE (PLASTIC TANKS 18"hg MAX.) |
| 19 | DNFG | 2800417 | 1 | FAN GUARD (before June 2006) |
| 20 | 543080TOP | 2800418 | 1 | FRAME COVER |
| 21 | 90134700 | 2800204 (4.16) | 7 | VANES (7pcs.) for VT4.16 |
| 21 | 901349 | 2800201 (4.25) | 7 | VANES (7pcs.) for VT4.25 |
| 21 | 901352 | 2800202 (4.40) | 7 | VANES (7pcs.) for VT4.40 |
| 22 | C752 | 2800501 (4.25) | 1 | INTERNAL FILTER-AIR CLEANER ELEMENT (4.25 / 4.40) |
| 22 | C643 | 2800504 (4.16) | 1 | INTERNAL FILTER-AIR CLEANER ELEMENT (4.16) |
| 3 | 164291D1(UL) | 2800419 | 1 | VACUUM PUMP VT4.16 230V. 1 ph. |
| 3 | 164591AO | 2800420 | 1 | VACUUM PUMP VT4.25 110V. 1 ph. |
| 3 | 164591D6 | 2800421 | 1 | VACUUM PUMP VT4.25 210V. +/- 6% 1 ph. |
| 3 | 164591DO(PB) | 2800422 | 1 | VACUUM PUMP VT4.25 230V. +/- 10% 1 ph. |
| 3 | 164891AO | 2800423 | 1 | VACUUM PUMP VT4.40 110V. 1 ph. |
| 3 | 164891DO | 2800424 | 1 | VACUUM PUMP VT4.40 220V. 1 ph. |
| 3 | 164891WO | 2800425 | 1 | VACUUM PUMP VT4.40 WIDE RANGE 3ph. |